

Piton • Haken construction method

[Outline]

It is a resin injection construction method which can be injected also to a micro crack of 0.2 mm or less low pressure and a low speed, and by injecting automatically using the capillarity of the epoxy resin of very low viscosity using injector type infusion instruments.

[The background of development]

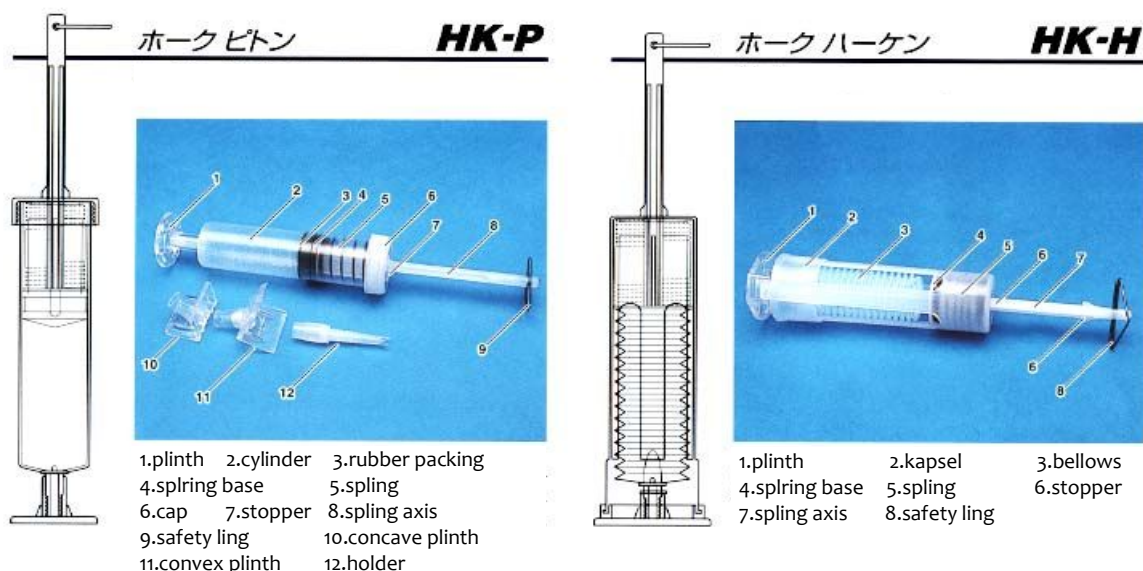
The power injection construction method is used as the repair method of a crack for many years, and the manual infusion-instruments which We call a grease pump, and step type infusion instruments and electromotive infusion instruments are used. However, there were extending a crack, if a power injection construction method's has high injection pressure, and a problem that It could not fully control an injection rate.

[Feature]

- ① Uniform execution is possible by low pressure, a low speed, and an automatic continuation injection of low viscosity resin.
- ② It can fully inject the detailed crack of 0.2 mm or less made conventionally impossible by use of super-low viscosity resin.
- ③ By abundant products offered, the correspondence to all cracks is possible.
- ④ Resin spreads even round the back part of a crack and sealing of concrete is possible.
- ⑤ The visual check of an injection situation is possible.
- ⑥ Don't need special apparatus, but since attachment is easy, a lot of execution is possible at a small number of manpower.
- ⑦ Since an infusion-instruments and injection material can be chosen according to the situation of the spot, It can respond to what kind of crack and an amotion repair.

[Application]

- Concrete structure, Crack repair and reinforcement of mortar

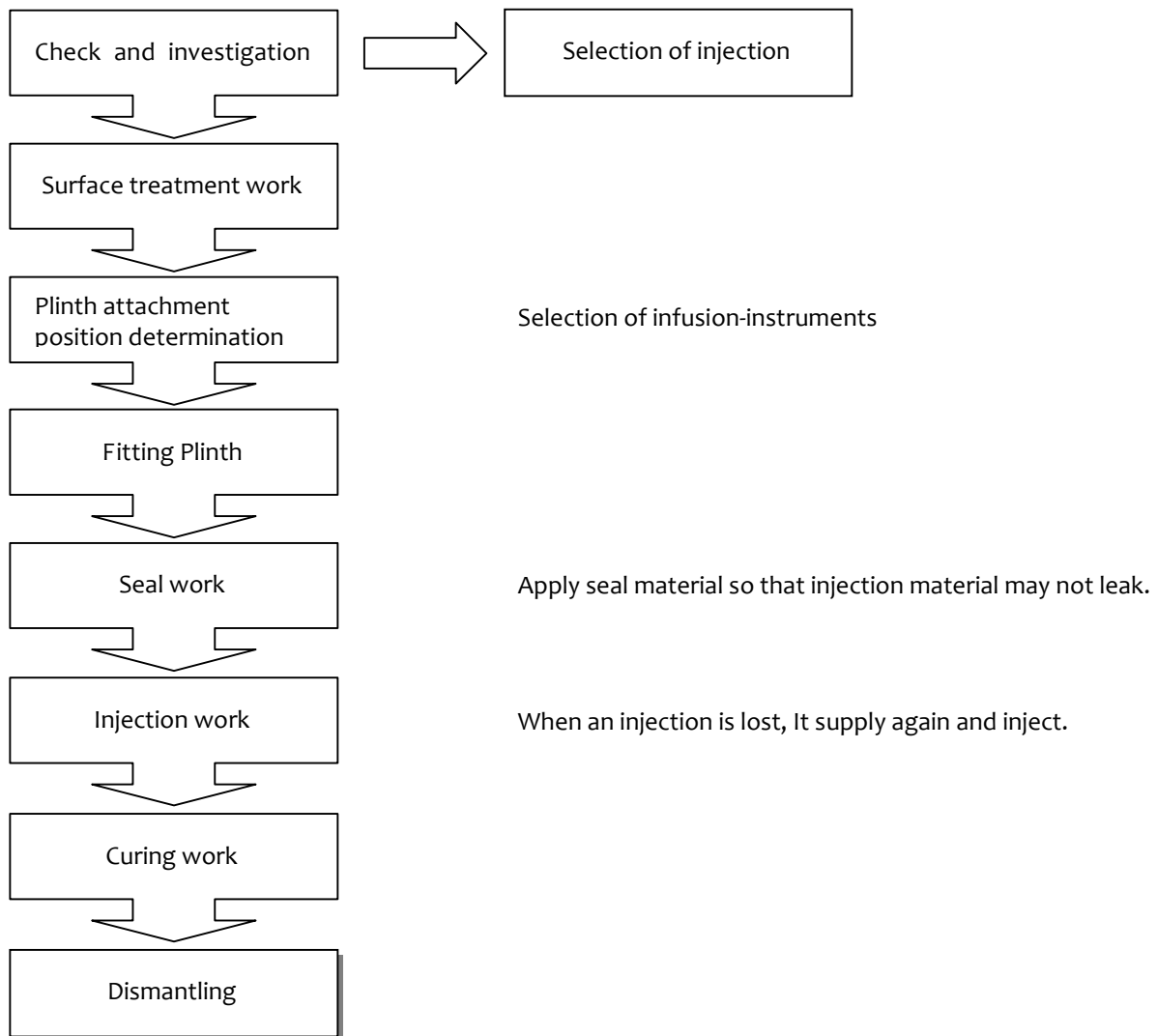


[Difference with a construction method besides]

Although rubber pressure, air pressure, etc. are used as the pressurization method of a low-pressure injection construction method, injection pressure may change and It may not be able to perform a necessary injection.

Furthermore, when it injects simultaneously from two or more injection holes, the air inside a crack is shut up and there is also a problem that the portion with which It cannot fill up an inside is left behind.

[Construction procedure]



【Reference】

Inc. HORK Osaka head office

9-55, Kikugaoka-cho, Hirakata-shi, Osaka 573-0091, Japan

Phone : 81-72-861-5555 Fax : 81-72-861-5522

E-mail : osaka@hork.co.jp

Tokyo branch

Mitsubishi Electric Setagaya building 1F, 3-10-3, Ikejiri, Setagaya-ku, Tokyo 154-0001, Japan

Phone : 81-3-5433-0550 Fax : 81-3-5433-0551

E-mail : tokyo@hork.co.jp